



# MOTIUS

WE R&D.

## BOM Analyzer

Motius GmbH

December 08, 2025 14:26 (4711561)



# BOM Analyzer

 Automotive

 Computer Vision

BOM Analyzer is a low-cost reverse engineering tool that takes a series of high-resolution images of a PCB, and even measures the height of components with a line laser that's projected onto the PCB at an angle.

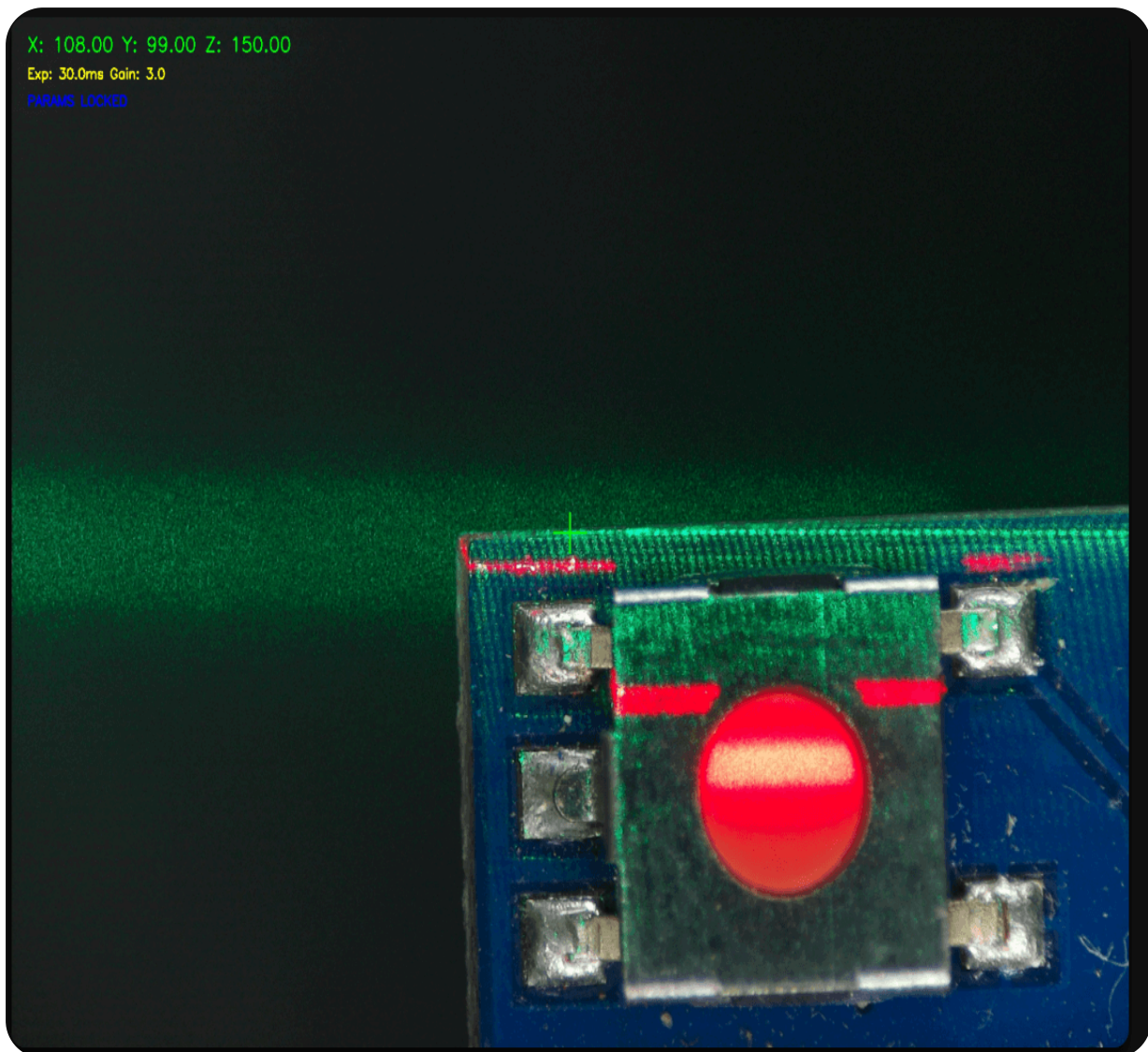


Using a custom computer vision model we achieve 98% accuracy in identifying surface mount components on the PCB. For the remaining 2%, there is a built-in labeling & retraining workflow.

We developed the hardware, control software, classification model, and user interface for this project for an automotive customer **from scratch in only a few weeks**. Motius is now looking for further pilot customers.

## Sensors

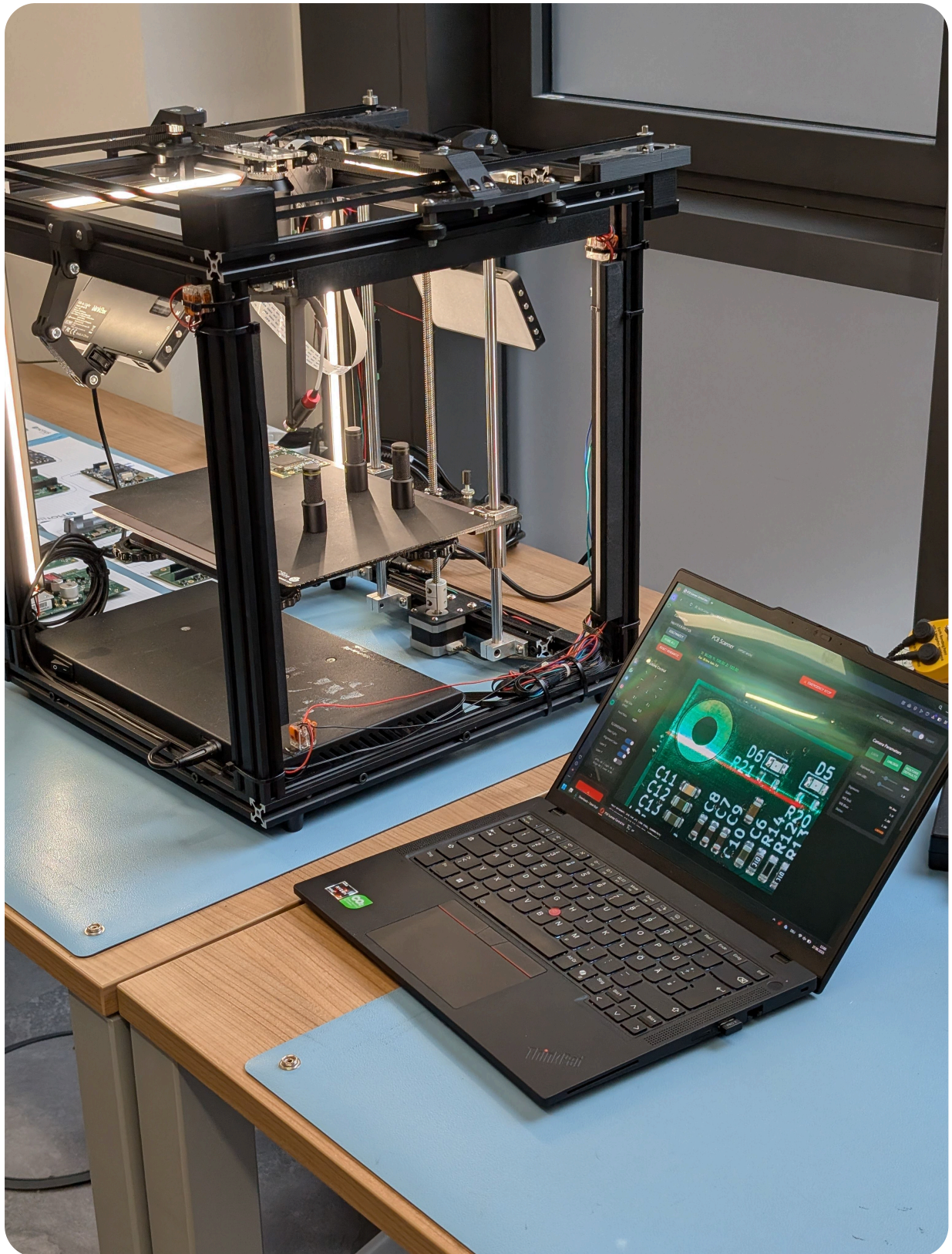
The machine uses a single camera to capture close up images of the PCB. Stitching several close-up captures together, avoids tall components occluding parts of the PCB.



*One of the red lasers (for height measurement) and green laser (for alignment) turned on. A combination of both are used for the auto focusing the camera*

Three lasers are further used for aligning the PCB properly on the scanning bed, for focussing the camera and measuring the height of the components. Two red lasers are used to determine the height of components based on the laser triangulation principle. A combination of both the red and green laser is used for auto-focusing the camera.





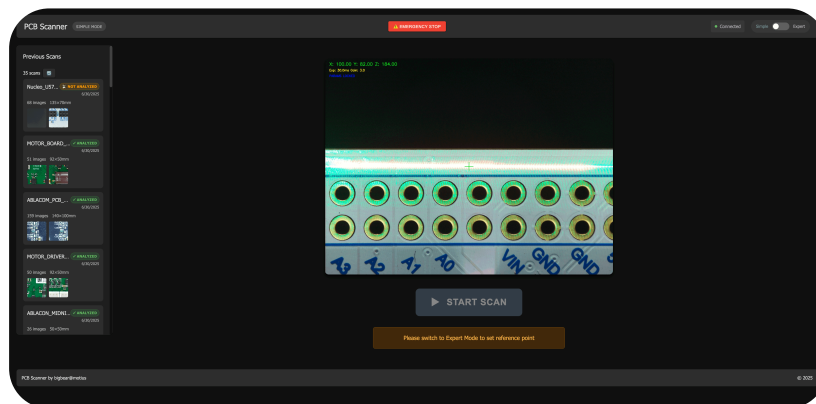
*BOM Analyzer is based on a modified CoreXY gantry, image classification can run on an edge device (or in this case on a laptop)*

## Control Software and User Interface

Our software is easy to use, but still lets experts manually control every aspect of the machine, and dive into every detail of the captured images, classification labels, dimensions, and detected component labels.



*Simple user interface, where the user places and aligns the PCB, before starting the scan*

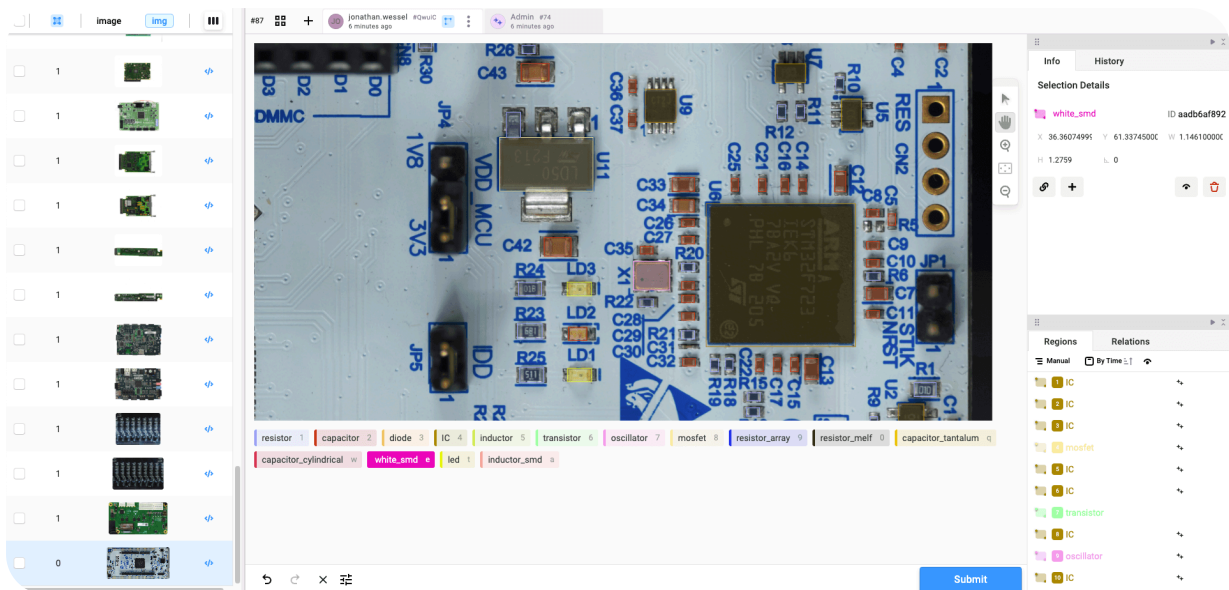


*Expert user interface, with more granulare controls and options for the scan*

## Labeling

Our system is based on a open source foundational model that is trained on open data sets, and then further extended with our own training set. Labeling is done using Label Studio.



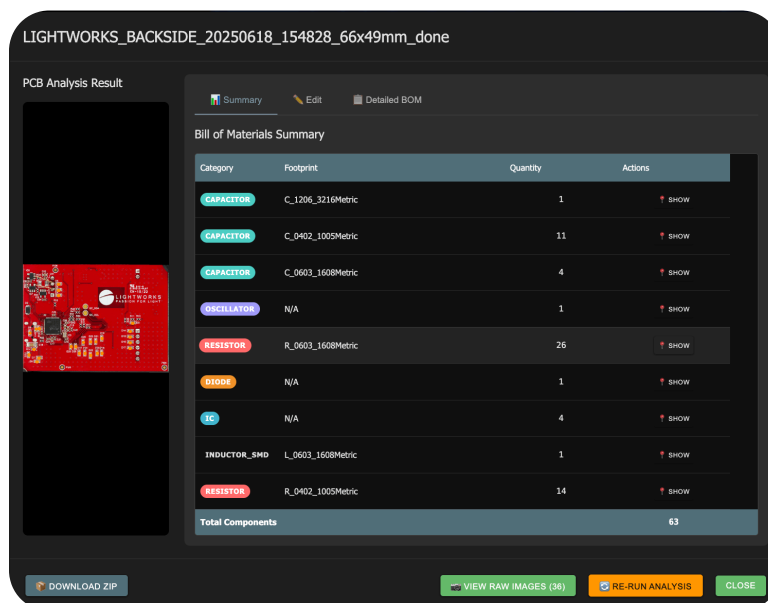


*Label Studio interface for labelling self scanned data*

## Results

The result of this design is a low-cost machine that can create highly detailed captures of the larges PCBs in minutes, and analyze & label their components in seconds.


Additionally, we put together our own database of >350,000 components that you will also gain full access to.



*Summary output of the scan, here highlighting the 26 detected reistors*

SONNENGLAS\_PCB\_20250618\_143436\_53x34mm\_done

PCB Analysis Result



Summary Edit Detailed BOM

Detailed BOM Table

Detailed Bill of Materials

LOOKUP ALL MPNS

EXPORT CSV

#	Category	MPN	Amount	Package	Length (mm)	Width (mm)	Height (mm)	Marking Code	Power	Pins
1	CAPACITOR		3	C_1206_3210M...	3.30	1.77		Enter marking code		
2	DIODE		2		2.76	1.87		Enter marking code		
3	IC		1		9.20	4.18		16F19324		
4	IC		1		3.24	1.97		PA8 212		
5	INDUCTOR		1		6.20	5.46		Enter marking code		
6	LED		1	LED_0603_160...	1.66	1.83		Enter marking code		
7	RESISTOR		18	R_0805_2012M...	2.16	1.46		Enter marking code		
8	TRANSISTOR		3		3.13	1.47		Enter marking code		
Total Components			38							

DOWNLOAD ZIP

VIEW RAW IMAGES (16)

RE-RUN ANALYSIS

CLOSE

Detailed BOM of the scan, with marking code detection using OCR. This can be used in combination with the marking code database to find components.